



Australian Government
Department of Home Affairs



Australian
BORDER FORCE

Immigration Detention and Community Statistics Summary

28 February 2018

Table of Contents

About this report.....	3
Enquiries.....	3
Acronyms.....	3
Immigration Detention And Community Statistics Summary.....	4
In Community under Residence Determination Population By State/Territory.....	5
Immigration Detention Population.....	6
From 1990 to 28 February 2018.....	6
People In Immigration Detention Facilities.....	7
Arrival Type.....	7
People In Immigration Detention.....	7
Nationality.....	8
Children In Immigration Detention.....	9
Time In Immigration Detention Facilities.....	11
Time In Community Under Residence Determination.....	12

About this report

This report provides an overview of the number of people in immigration detention and Regional Processing Centres as at midnight on the date of the report. The report is produced on a monthly basis.

Data is sourced from several departmental processing and recording systems. Data relating to the immigration detention population is dynamic and there can be delays in transmission of information from the department's immigration detention network operations. Variations in figures between this report and previous issues can occur. Due to these issues, data from the current financial year should always be considered provisional.

Further information about immigration detention is available at:

<http://www.homeaffairs.gov.au/about/immigration-detention-in-australia>

Enquiries

Comments or enquiries concerning this report should be sent using the department's client service feedback form quoting the name and date of the report.

See: <http://www.homeaffairs.gov.au/about/contact>

Acronyms

Table 1 – Acronyms used in this document

Acronym	Description
APOD	Alternative Place of Detention
IMA	Illegal Maritime Arrival
IDC/F	Immigration Detention Centre/Facility
IRH	Immigration Residential Housing
ITA	Immigration Transit Accommodation
RPC	Regional Processing Centre
S501	Section 501 of the Migration ACT
S501 Visa Cancellation	Visa cancellations based on character or related grounds

Immigration Detention And Community Statistics Summary

At 28 February 2018, there were 1337 people in immigration detention facilities, including 1004 in immigration detention on the mainland and 333 in immigration detention on Christmas Island.

A further 442 people were living in the community after being approved for a residence determination and 18,783 were living in the community after grant of a Bridging Visa E.

The table below reflects figures based on records in Department of Immigration and Border Protection systems.

Table 2 – People in Immigration Detention Facilities (IDFs), Alternative Places of Detention (APODs), Regional Processing Centres (RPCs) and the Community at 28 February 2018

Place of immigration detention	Men	Women	Children	Total	Change from Previous Summary 31/01/18
Christmas Island IDC	333	0	0	333	- 1
Maribyrnong IDC	93	11	0	104	+ 12
Perth IDC	21	6	0	27	+ 1
Villawood IDC	452	42	0	494	+ 24
Yongah Hill IDC	220	0	0	220	+ 2
Mainland APODs	<5	<5	<5	6	+ 3
Total IDCs/APODs	1,121	62	<5	1,184	+ 41
Adelaide ITA	22	0	0	22	0
Brisbane ITA	48	13	<5	63	+ 16
Melbourne ITA	62	5	<5	68	- 7
Total in ITA	132	18	<5	153	+ 9
Total in IDC/F	1,253	80	<5	1,337	+ 50
Total in Community under Residence Determination	132	137	173	442	- 5
Total IMA in Community on Bridging Visa E (Including people in a re-grant process)	13,176	2,403	3,204	18,783	- 346
Republic of Nauru (RPC)	244	35	30	309	- 27
Manus Province, Papua New Guinea (RPC)	0	0	0	0	0
Total IMA in RPCs	244	35	30	309	- 27
Detention Group					
S501 Visa Cancellation	470	18	0	488	- 2
Illegal Maritime Arrival	333	6	0	339	+ 5
Other	450	56	<5	510	+ 47
Total	1,253	80	<5	1,337	+ 50

In Community under Residence Determination Population By State/Territory

Of the 442 people approved for a residence determination to live in the community, 36.4 per cent were in Victoria, 25.8 per cent in Queensland, 24 per cent in New South Wales, 7 per cent in South Australia and 6.8 per cent in Western Australia.

Table 3 – People in the Community under Residence Determination by State/Territory at 28 February 2018

State/Territory	Adult Male	Adult Female	Child Male (<18 years)	Child Female (<18 years)	Total
Victoria	51	47	36	27	161
Queensland	33	30	30	21	114
New South Wales	27	41	22	16	106
South Australia	7	10	5	9	31
Western Australia	14	9	5	<5	30
Total	132	137	98	75	442

Immigration Detention Population

From 1990 to 28 February 2018

The overall number of people in immigration detention including in the community under residence determination has decreased by 154 to 1779 compared with 1933 at the end of February 2017. This decrease takes into account releases of detainees into the community under residence determination and detainees granted Bridging E visas (BVEs) as well as decreases through return and removal activities.

Figure 1 – Population in Immigration Detention

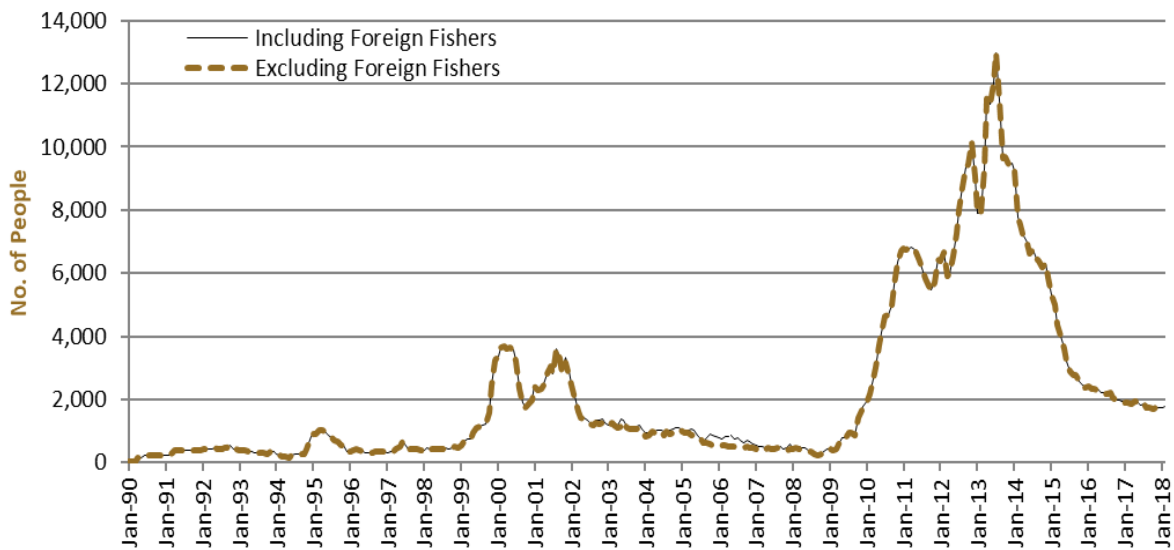


Figure 1 above, shows the number of people in immigration detention from 1990 to the date of this report. The trend had a consistent rise of people in immigration detention from January 2009 to January 2013, but has since had consistent decline.

People In Immigration Detention Facilities

Arrival Type

There were 387 people who arrived unlawfully by air or boat, in held immigration detention facilities at 28 February 2018 representing 28.9 per cent of the total immigration detention population.

There were also 950 people (71.1 per cent of the total immigration population) who arrived in Australia lawfully and were subsequently taken into immigration detention for either overstaying or having their visas cancelled for breaching visa conditions.

Figure 2 – People in Held Immigration Detention Facilities by Detention Group

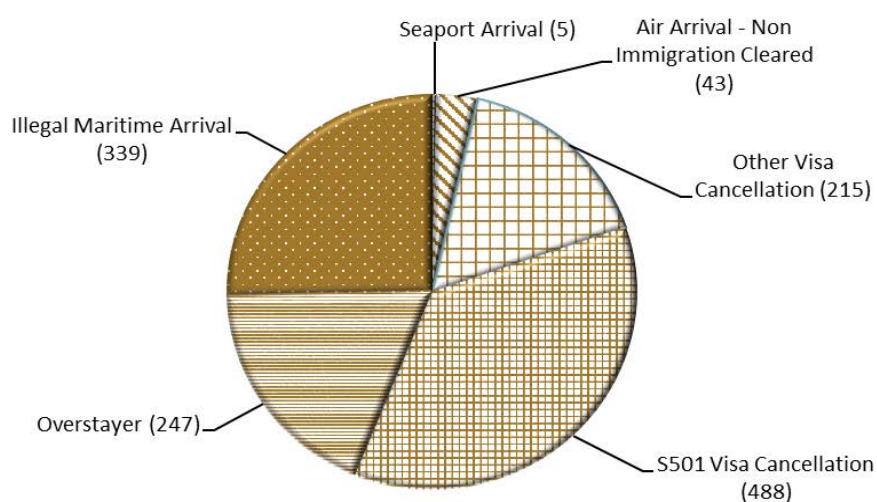


Figure 2 above, shows the number of people in held immigration detention facilities by detention group, including Overstayers, S501 and Other Visa Cancellations, Foreign Fishers, Illegal Maritime Arrivals, Unauthorised Air Arrivals, and if applicable – Inadequately Documented Crew Members and Others such as stowaways and ship deserters.

Table 4 – People in Held Immigration Detention Facilities by Detention Group at 28 February 2018

Place of immigration detention	S501 Visa Cancellation	IMA	Other Detention Group	Total	Change from Previous Summary 31/01/18
Christmas Island IDC	178	90	65	333	- 1
Maribyrnong IDC	30	12	62	104	+ 12
Perth IDC	11	6	10	27	+ 1
Villawood IDC	170	114	210	494	+ 24
Yongah Hill IDC	86	55	79	220	+ 2
Mainland APODs	0	<5	5	6	+ 3
Total IDCs/APODs	475	278	431	1,184	+ 41
Adelaide ITA	<5	11	9	22	0
Brisbane ITA	10	14	39	63	+ 16
Melbourne ITA	<5	36	31	68	- 7
Total in IRH and ITA	13	61	79	153	+ 9
Total in IDC/F	488	339	510	1,337	+ 50

People In Immigration Detention

Nationality

At 28 February 2018, there were 1337 people in held immigration detention facilities. Of these 1337 people, 13.9 per cent were from New Zealand, 8.7 per cent were from Sri Lanka, 8 per cent were from Vietnam, 7.6 per cent were from Iran and 4.8 per cent were from China.

Table 5 – People in Held Immigration Detention Facilities by Nationality at 28 February 2018

Nationalities	Adult Male	Adult Female	Child Male (<18 years)	Child Female (<18 years)	Total
New Zealand	169	17	0	0	186
Sri Lanka	115	<5	0	0	116
Vietnam	94	13	0	0	107
Iran	101	<5	0	0	102
China	49	15	0	0	64
Malaysia	48	6	0	0	54
United Kingdom	52	<5	0	0	53
India	44	<5	<5	0	46
Iraq	43	<5	0	0	45
Sudan	42	0	0	0	42
Other	496	23	<5	<5	522
Total	1,253	80	<5	<5	1,337

At 28 February 2018, 442 were people living in the community after being approved for a residence determination. Of these 442 people, 54.1 per cent were from Iran, 11.8 per cent were from Stateless, 9.3 per cent were Sri Lanka, 3.6 per cent were from Iraq and 2.3 per cent were from Somalia.

Table 6 – People in the Community under Residence Determination by Nationality at 28 February 2018

Nationalities	Adult Male	Adult Female	Child Male (<18 years)	Child Female (<18 years)	Total
Iran	72	83	46	38	239
Stateless	17	12	10	13	52
Sri Lanka	11	10	15	5	41
Iraq	8	5	<5	<5	16
Somalia	<5	8	0	0	10
Other	22	19	26	17	84
Total	132	137	98	75	442

Children In Immigration Detention

At 28 February 2018 there were less than five children (aged less than 18 years) in Immigration Residential Housing, Immigration Transit Accommodation and Alternative Places of Detention.

Figure 3 – Children in Immigration Residential Housing, Immigration Transit Accommodation and Alternative Places of Detention

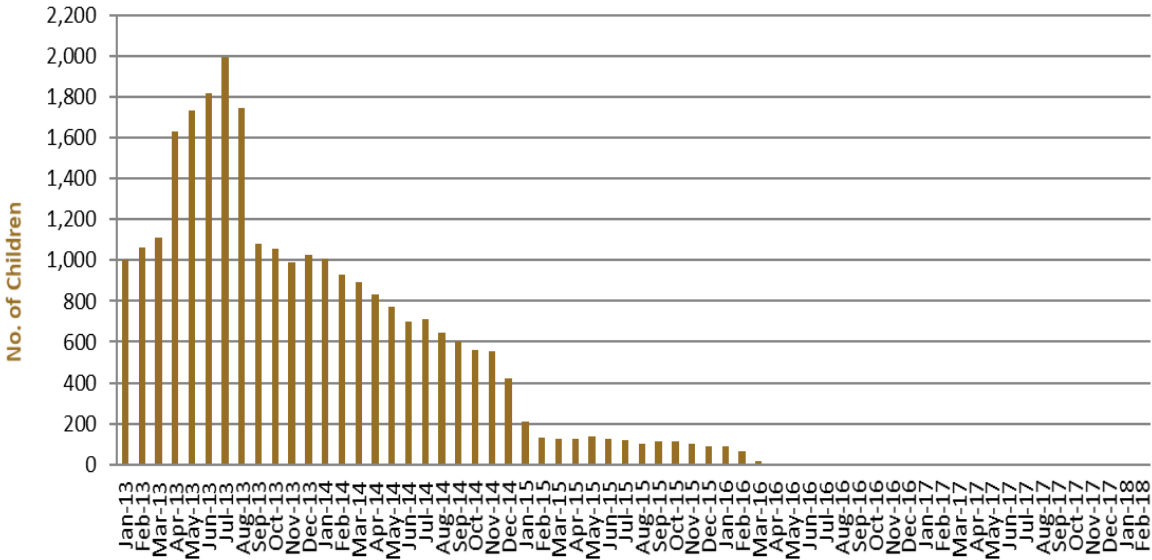


Figure 3 above, shows the number of children in immigration detention facilities and alternative places of detention from January 2013 to the date of this report. The continuous increase in the number of children in detention facilities from April 2013 to August 2013 was due to a rapid increase in illegal maritime arrivals during this period. The number of children in immigration detention facilities reduced in September 2013, as children completed mandatory processing and were transferred into the community. The number of children in detention facilities continued to decline during the late 2013 and 2014, with further reduction in January 2015.

At 28 February 2018, the number of children living in the community after being approved for a residence determination remained the same at 173 with the previous report.

Figure 4 – Children in the Community under Residence Determination

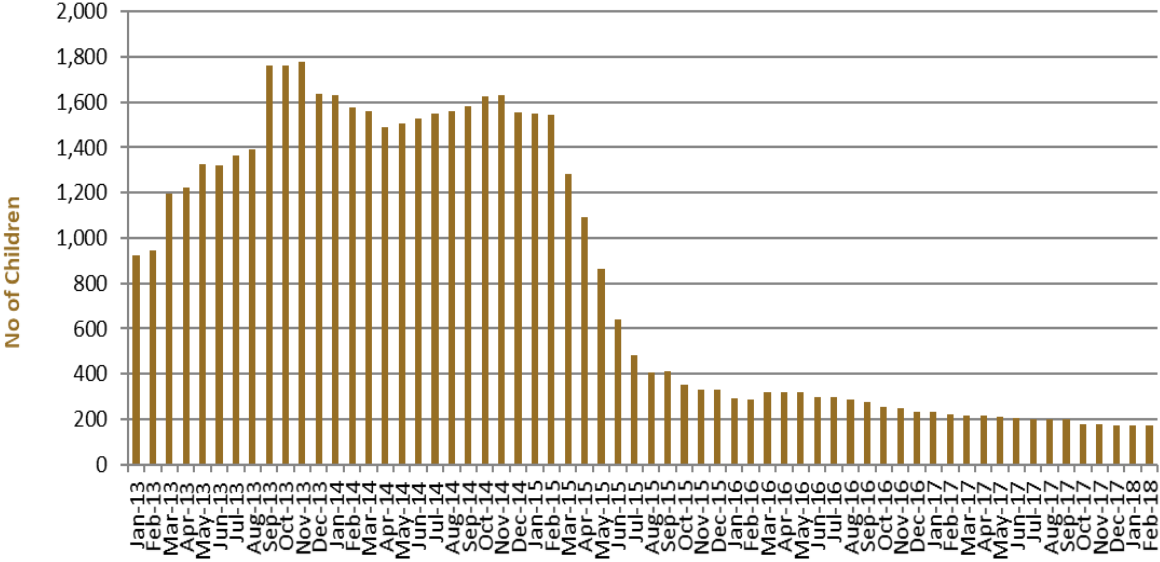


Figure 4 above, shows the number of children in the community under residence determination from January 2012 to the date of this report. The number of children in the community under residence determination, has levelled off at its lowest number since the peak in November 2013, as a result of releases into the community on Bridging E visas.

Table 7 – Children in Immigration Detention and IMA Children in the Community on a Bridging E Visa at 28 February 2018

Placement Type	Children
Immigration Residential Housing	0
Immigration Transit Accommodation	<5
Alternative Places of Detention	<5
Total Children in Immigration Detention Facilities	<5
Total Children in the Community under a Residence Determination	173
Total IMA Children in the Community on a Bridging E visa (including in re-grant process)	3,204

Time In Immigration Detention Facilities

At 28 February 2018, there were 1337 people in immigration detention facilities. Of these 1337 people, 36.9 per cent had been detained for 91 days or less and 67.2 per cent had been detained for 365 days or less.

Table 8 – Length of Time of People in Held Immigration Detention Facilities at 28 February 2018

Period Detained	Total	% of Total
7 days or less	77	5.8%
8 days - 31 days	170	12.7%
32 days - 91 days	247	18.5%
92 days - 182 days	185	13.8%
183 days - 365 days	219	16.4%
366 days - 547 days	107	8.0%
548 days - 730 days	70	5.2%
Greater than 730 days	262	19.6%
Total	1,337	100%

At 28 February 2018, the average period of time for people held in detention facilities was 426 days.

Figure 5 – Average Number of Days of People in Held Immigration Detention Facilities only

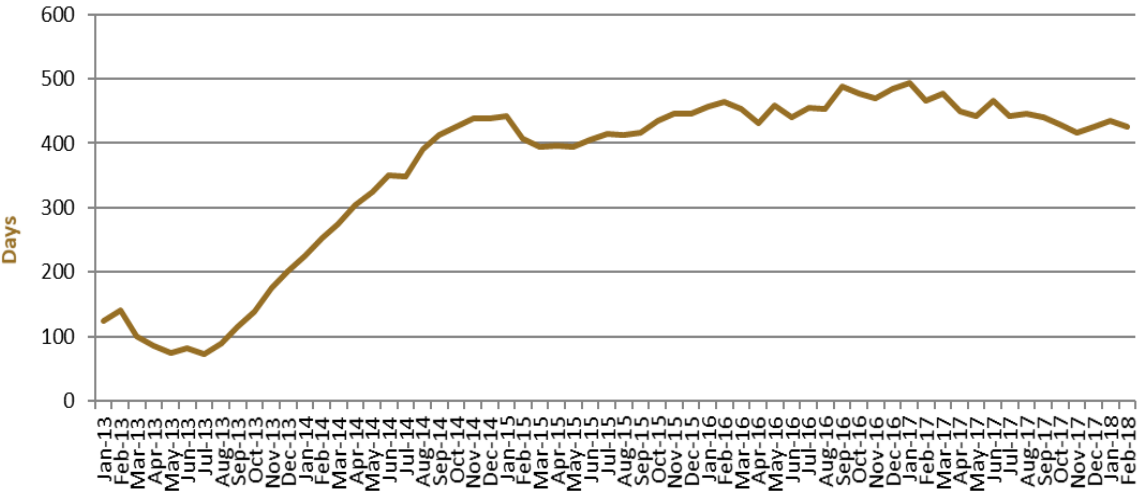


Figure 5 above, shows the average days in held immigration detention at the end of each month from January 2013 to the date of this report. The average period of time for people held in detention facilities steadily increased from July 2013 to January 2015.

Time In Community Under Residence Determination

Of the 442 people in the community under residence determination, as at 28 February 2018, 5.9 per cent had been in the community for 91 days or less and 18.1 per cent had been in the community for 365 days or less.

Table 9 – Length of Time of People in Community under Residence Determination at 28 February 2018

Period Detained	Total	% of Total
7 days or less	7	1.6%
8 days - 31 days	<5	0.7%
32 days - 91 days	16	3.6%
92 days - 182 days	14	3.2%
183 days - 365 days	40	9.0%
366 days - 547 days	43	9.7%
548 days - 730 days	152	34.4%
Greater than 730 days	167	37.8%
Total	442	100%